

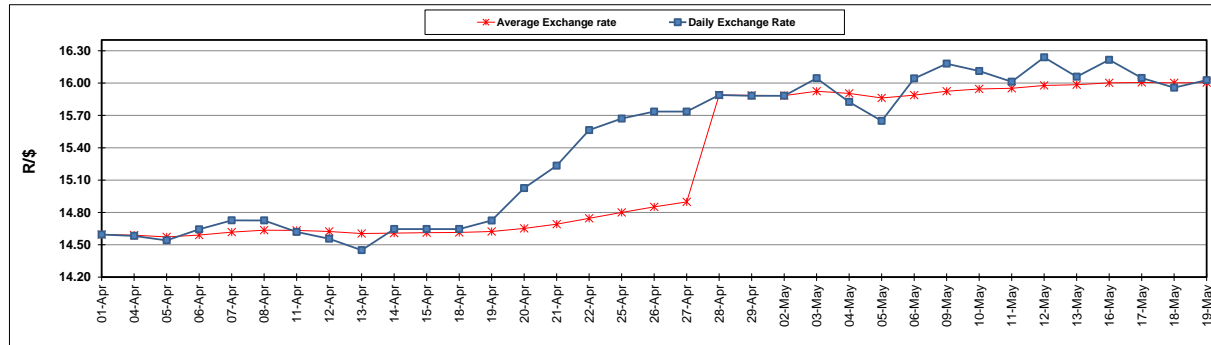
	PETROL 95 ULP	PETROL 93 ULP & LRP	DIESEL 0.05%	DIESEL 0.005%	ILL. PAR.
GAUTENG PUMP PRICE (SA c/l) AS FROM 04/05/2022	2,184.000	2,151.000	-	-	-
WHOLESALE PRICE (SA c/l) AS FROM 04/05/2022	-	-	2,199.440	2,215.840	1,664.288
SINGLE NATIONAL MAXIMUM RETAIL PRICE	-	-	-	-	2,194.000
BASIC FUEL PRICE - 19/05/2022 (SA c/l)	1,540.099	1,505.429	1,494.616	1,506.270	1,469.261
PRESS RELEASE CONTRIBUTION TO BFP 04/05/2022 - 19/05/2022 (SA c/l)	1,264.410	1,241.410	1,497.630	1,514.030	1,446.128
UNIT OVER/(UNDER) RECOVERY - 19/05/2022 (SA c/l)	(275.689)	(264.019)	3.014	7.760	(23.133)
AVERAGE BASIC FUEL PRICE 28/04/2022 - 19/05/2022	1,494.540	1,466.274	1,610.598	1,625.621	1,606.373
AVERAGE UNIT OVER/(UNDER) RECOVERY 28/04/2022 - 19/05/2022	(226.555)	(221.289)	(136.718)	(133.841)	(180.995)

ANALYSIS MOVEMENT OF AVERAGE OVER/(UNDER) RECOVERY

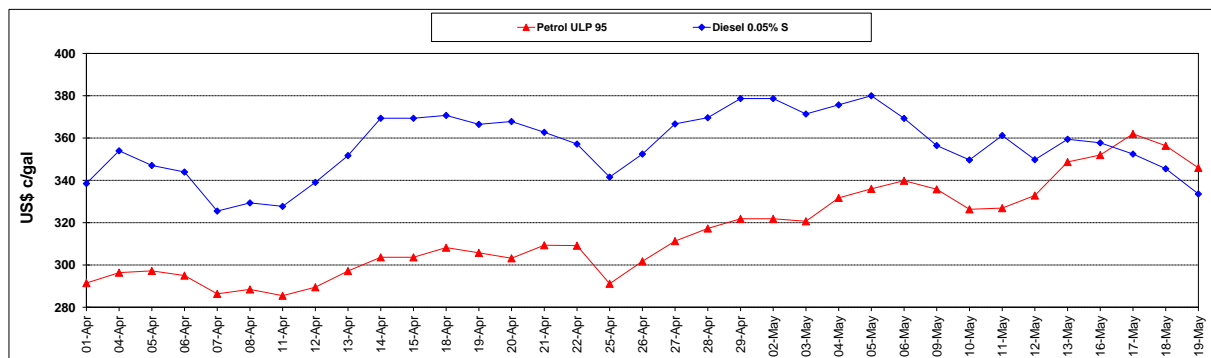
	PETROL 95	PETROL 93	DIESEL 0.05%	DIESEL 0.005%	ILL. PAR.
- MOVEMENT IN INTERNATIONAL PRODUCT PRICES	(123.281)	(119.969)	(25.425)	(21.510)	(69.994)
- MOVEMENT IN EXCHANGE RATE	(103.274)	(101.320)	(111.293)	(112.331)	(111.001)
AVERAGE UNIT OVER/(UNDER) RECOVERY 28/04/2022 - 19/05/2022	(226.555)	(221.289)	(136.718)	(133.841)	(180.995)

R/\$ EXCHANGE RATE - (R/\$16.0273 - 19/05/2022)

EXCHANGE RATE USED IN BASIC FUEL PRICE



INTERNATIONAL PRODUCT PRICES OF BASKET USED IN BASIC FUEL PRICE



BASIC FUEL PRICE IN SA CENTS PER LITRE

